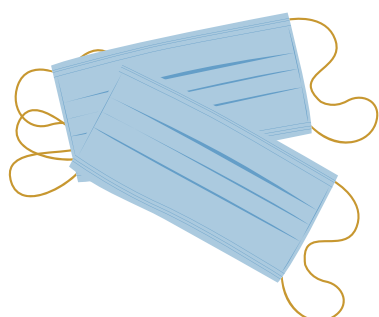


RE-OPENING DIOCESE OF JOLIET CATHOLIC SCHOOLS QUICK REFERENCE GUIDE

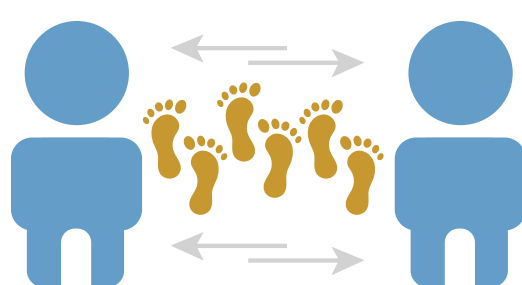
MASKS



All individuals age two and older must wear masks while at school. Masks may be removed for brief periods of time under certain circumstances (outdoor play or lunch). Plan to send extra masks to school with your child. We will spend time at the beginning of the year helping students learn how to safely keep masks in place.

SOCIAL DISTANCING

Each school is working to spread out classroom desks and tables to 6-feet and arrange them to face the front of the room. Schools will also use various entrances and exits to minimize contact between students.



ACADEMICS



Schools will continue to deliver high-quality instruction in core subjects (religion, language arts, math, science and social studies). Special subject areas (art, music, PE, etc.) will be provided as feasible for each school. Safety and health requirements will create new complexities in instruction, but our commitment to provide your child the best possible faith-based education remains.

WELLNESS CHECKS

When students enter school every day, an adult will administer a temperature check and ask the student if they are feeling well. Students will also be directed to use hand sanitizer upon entering the building or classroom. Any student with a temperature 100.4 degrees Fahrenheit will be sent home.



CLEANING AND SANITIZING

School plans include specific requirements for the ongoing cleaning and sanitizing of school buildings. There will be a particular focus on high-touch areas and common surfaces.

EXTRACURRICULARS

Each school provides guidance on extracurricular activities specific to their school building in their plans. Extended care will follow health and safety guidelines outlined in each school plan.



**LOOKING FOR MORE
INFORMATION?**

**READ THE RE-OPENING OF OUR
SCHOOLS FAQs FOR PARENTS**